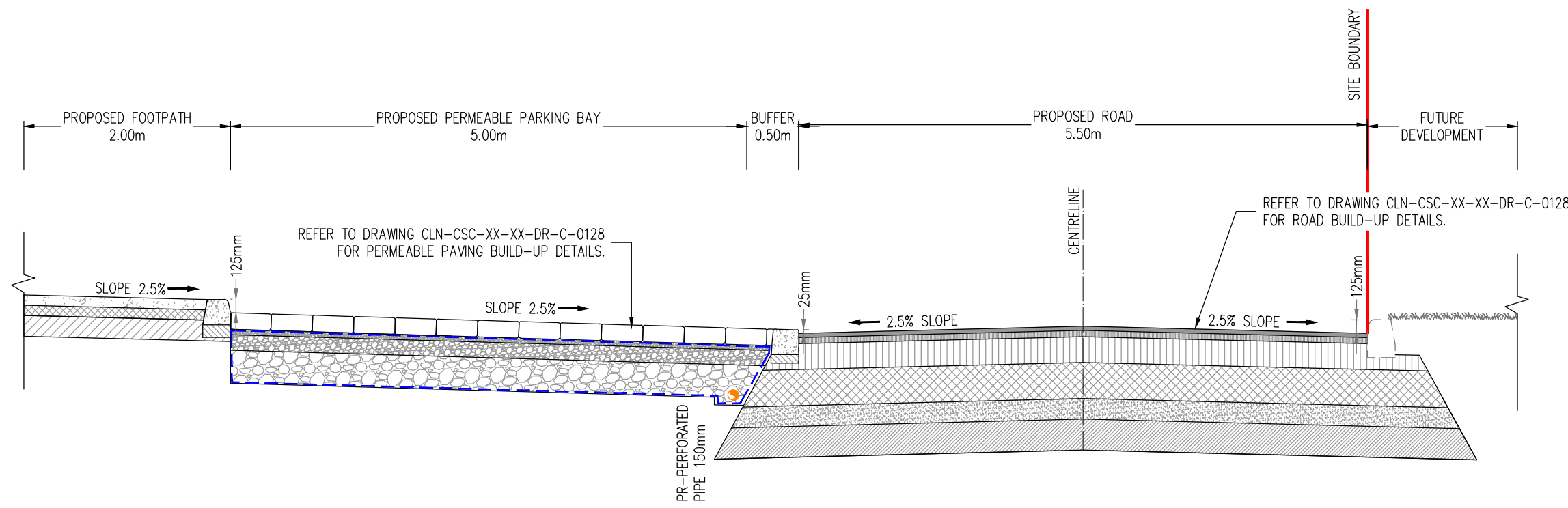
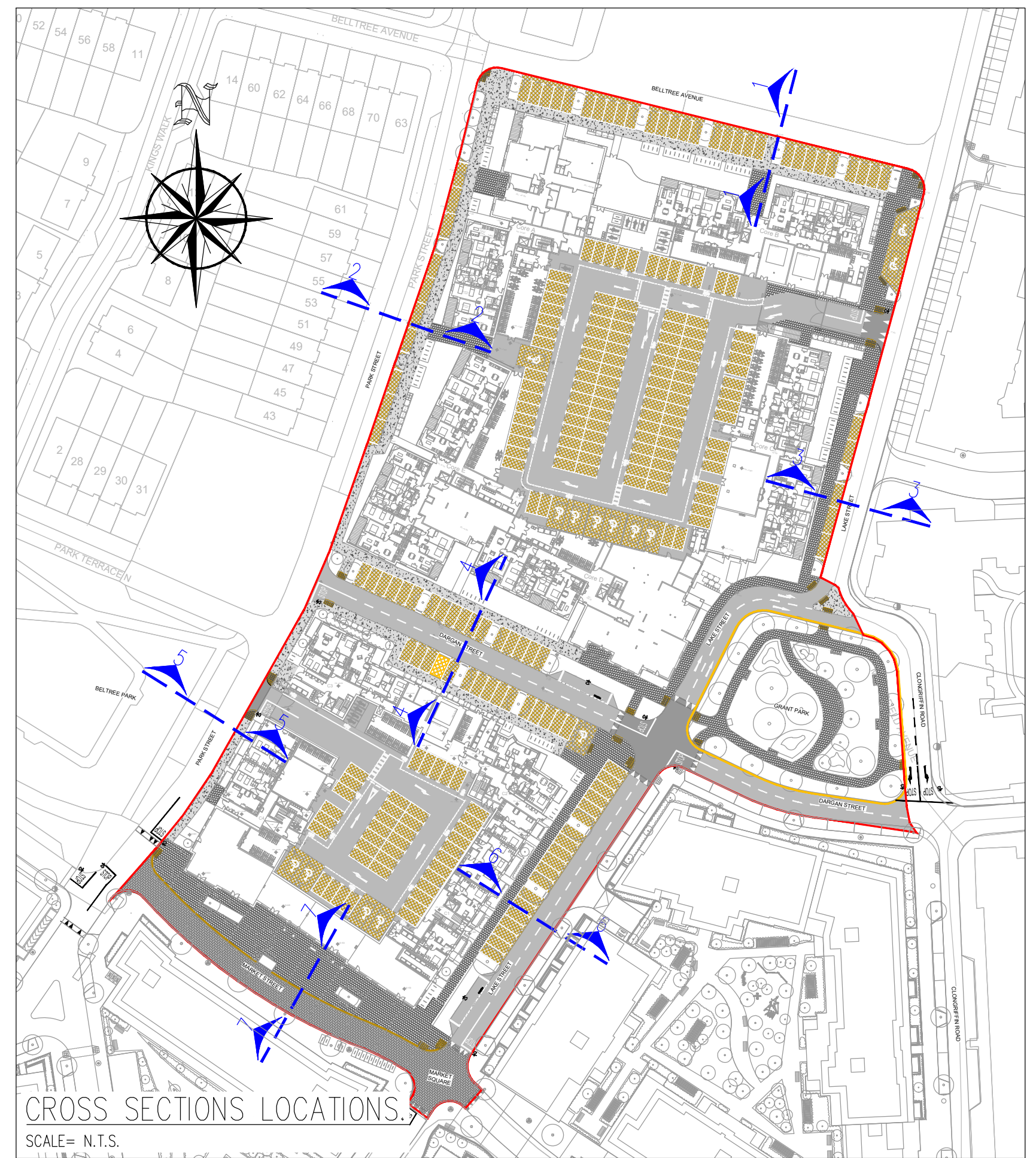


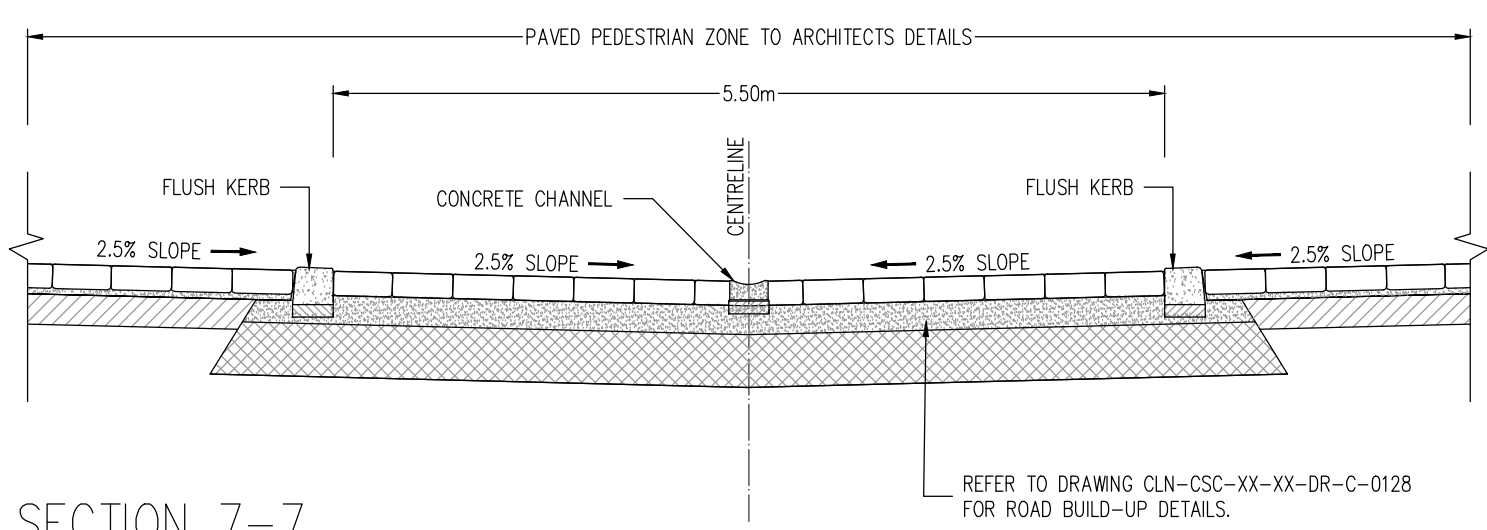
SECTION 5-5.
SCALE 1:50



SECTION 6-6.
SCALE 1:50

ROADS LEGEND:

- PROPOSED ROAD
- PROPOSED SHARED SURFACE
- PROPOSED FOOTPATH
- PROPOSED PAVING FOOTPATH AS PER LANDSCAPE ARCHITECT'S DETAILS
- PROPOSED PARKING SPACE
- PROPOSED TACTILE PAVING BUFF COLOURED (UNCONTROLLED CROSSING)



SECTION 7-7.
SCALE 1:50

PLANNING DRAWING.
NOT FOR CONSTRUCTION.
ALL LEVELS GIVEN ARE
RELATIVE TO ORDNANCE DATUM.
THIS DRAWING HAS BEEN ISSUED FOR INFORMATION
PURPOSES ONLY AND MUST NOT BE USED
FOR CONSTRUCTION UNDER ANY CIRCUMSTANCES

NOTES

- For setting out refer to Architect's drawings.
- This drawing to be read in conjunction with all other Architectural and Engineering drawings and all other relevant drawings and Specifications.
- DO NOT SCALE THIS DRAWING. Use figured dimensions only.
- No part of this document may be reproduced or transmitted in any form or stored in any retrieval system of any nature without the written permission as copyright holder except as agreed for use on the project for which the document was originally issued.
- Ordnance Survey Ireland Licence Number EN 0074024

Rev. No.	Date	REVISION NOTE	Drn. By	Chkd. By
P1	16.05.2024	ISSUED FOR STAGE 2 PLANNING	JF	GL
P2	28.06.2024	ISSUED FOR STAGE 3 PLANNING	JS	JF
P3	23.07.2024	ISSUED FOR REVIEW	JS	JF
P4	08.08.2024	ISSUED FOR REVIEW	JF	GF
P5	13.08.2024	ISSUED FOR PLANNING SUBMISSION	JS	GF

Client		LDA Clongriffin Blocks 5 & 6	
Project		Typical Cross Sections Sheet 2 of 2	
Dwg. No.		CLN-CSC-XX-XX-DR-C-0124	
Date	Drn by	Chkd by	Apprv by
MAY 2024	JS	JF	NB
Scale		1:50 @ A1	
Revision		P5	

CS Consulting Group
DUBLIN | LONDON | LIMERICK

Head Office
19-22 Dame Street, Dublin 2.
T: +353 (0)1 5480863
e: info@csconsulting.ie
w: www.csconsulting.ie

Quality
Environment
Health & Safety

I.S. EN ISO 9001:2008
I.S. EN ISO 14001:2004
I.S. EN ISO 50001:2011
OHSAS 18001:2007