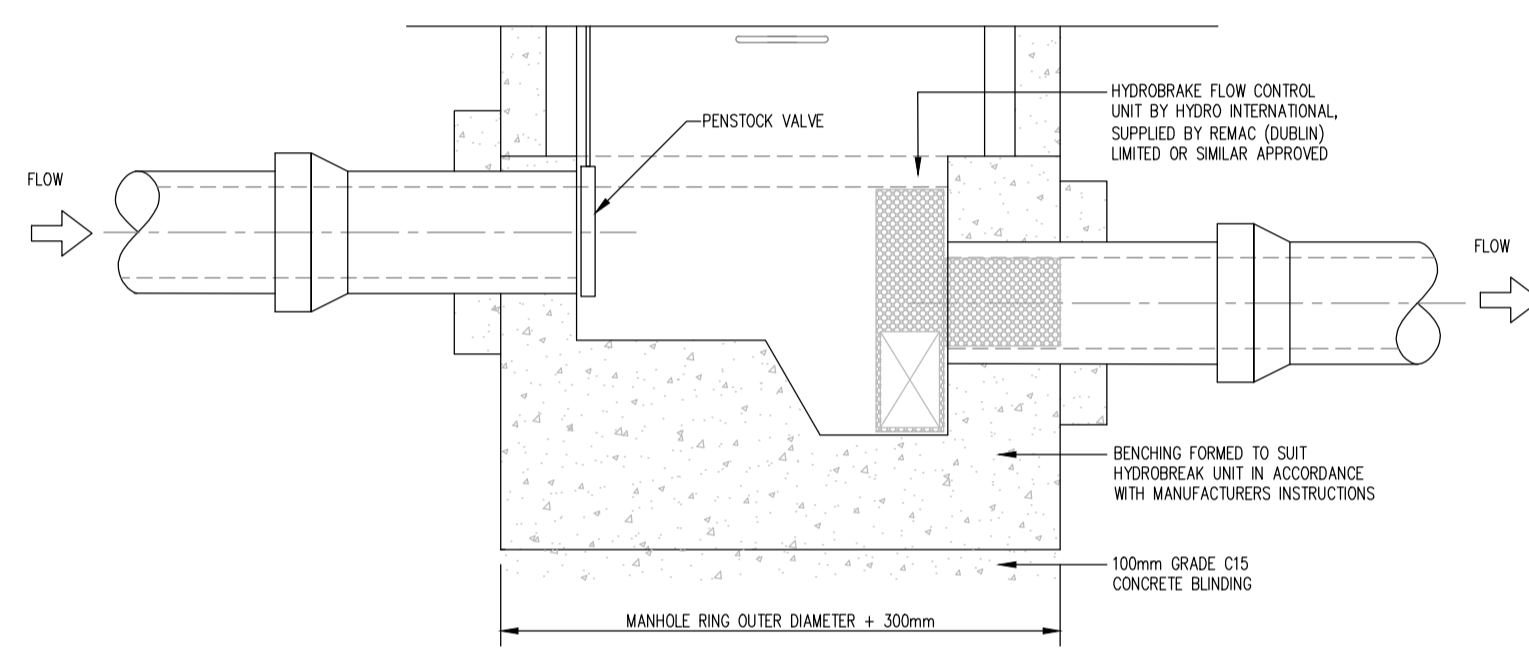
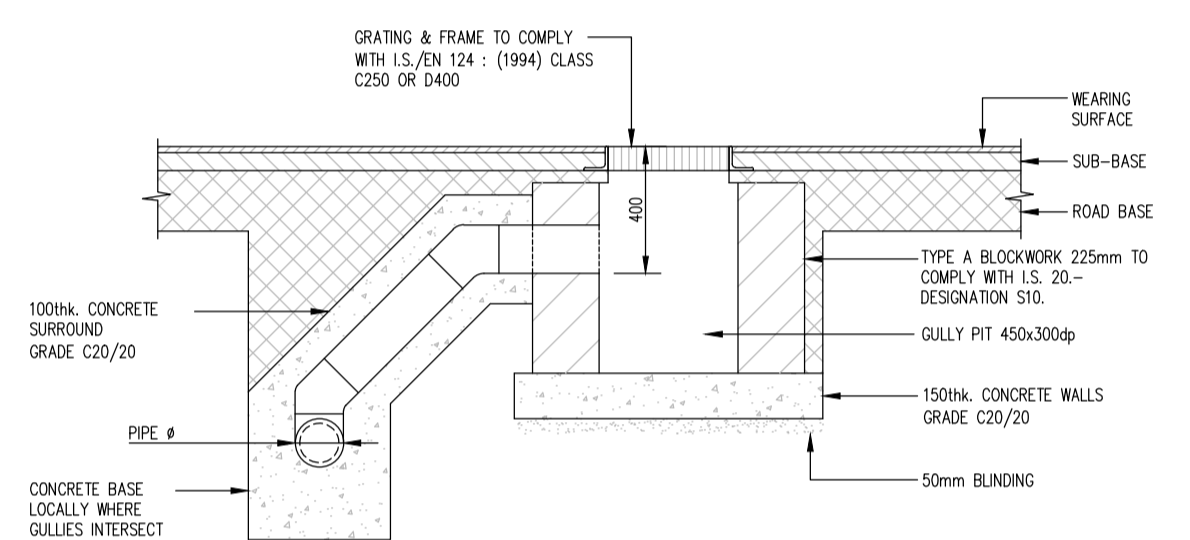


TYPICAL PERMEABLE PAVING CONNECTION DETAIL
SCALE 1:50

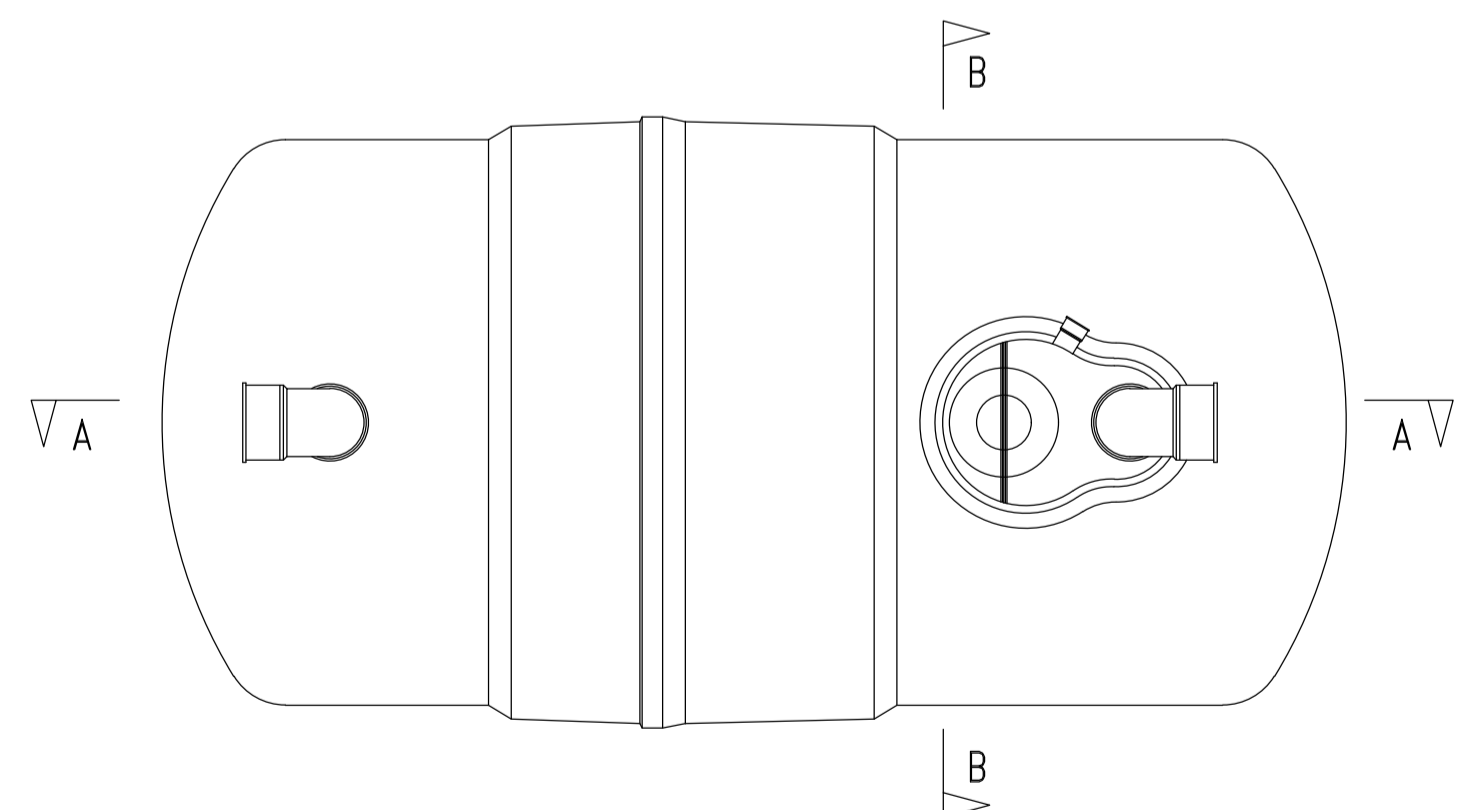


HYDROBRAKE CHAMBER
MAX. DEPTH G.L. TO I.L. - 3.0m
SCALE 1:25

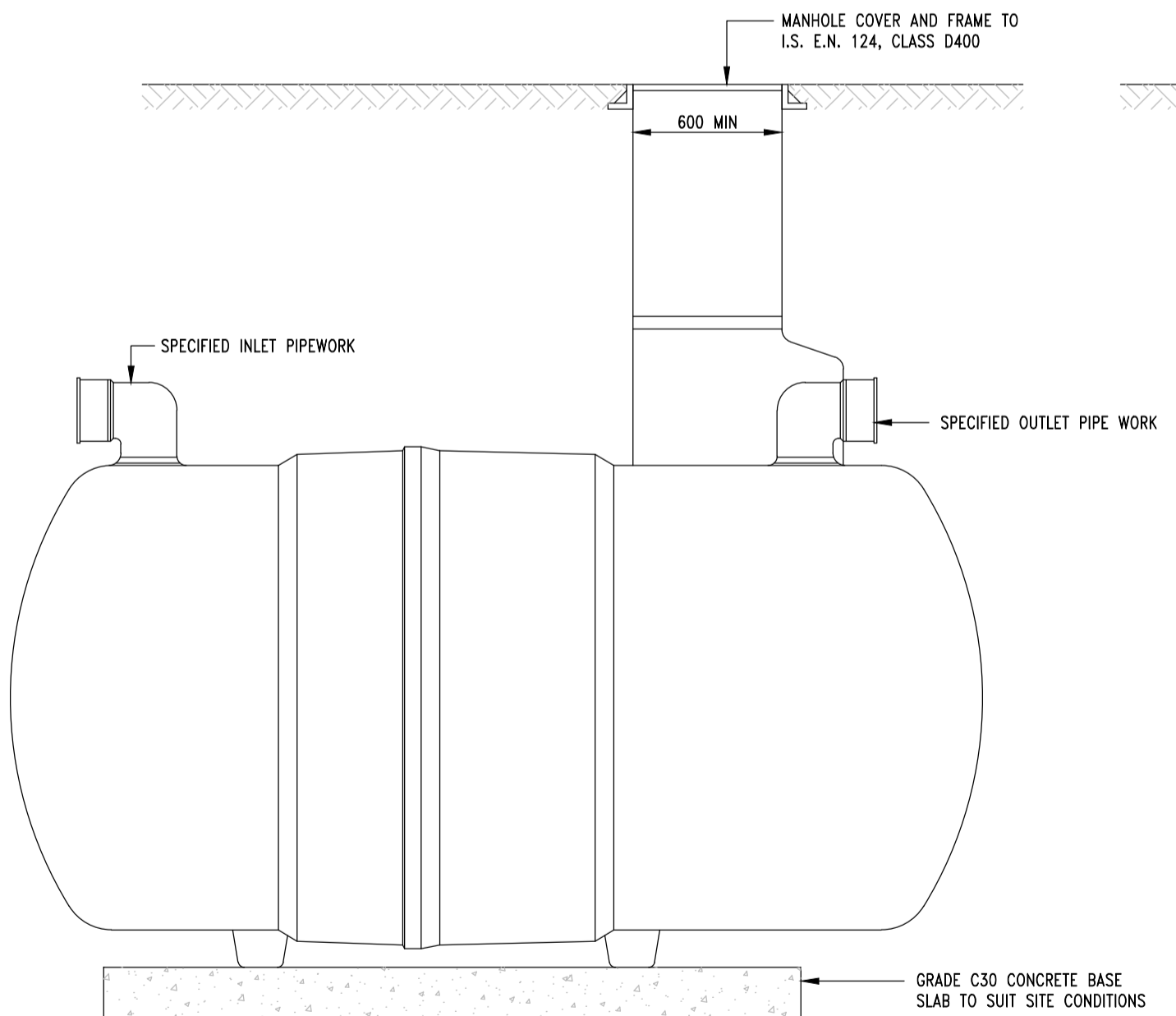
- NOTES :**
1. THE MINIMUM DEPTH FROM THE TOP OF THE GRATING TO THE BOTTOM OF THE GULLY OUTLET IS TO BE 400mm WHEN THE CONNECTING PIPE IS UNDER A CARRIAGEWAY AND 600mm ELSEWHERE.
 2. WHEN AN IN-SITU CAST GULLY HAS A TRAP, THE STOPPERS SHALL COMPLY WITH THE REQUIREMENTS OF BS 5911 : PART 2.



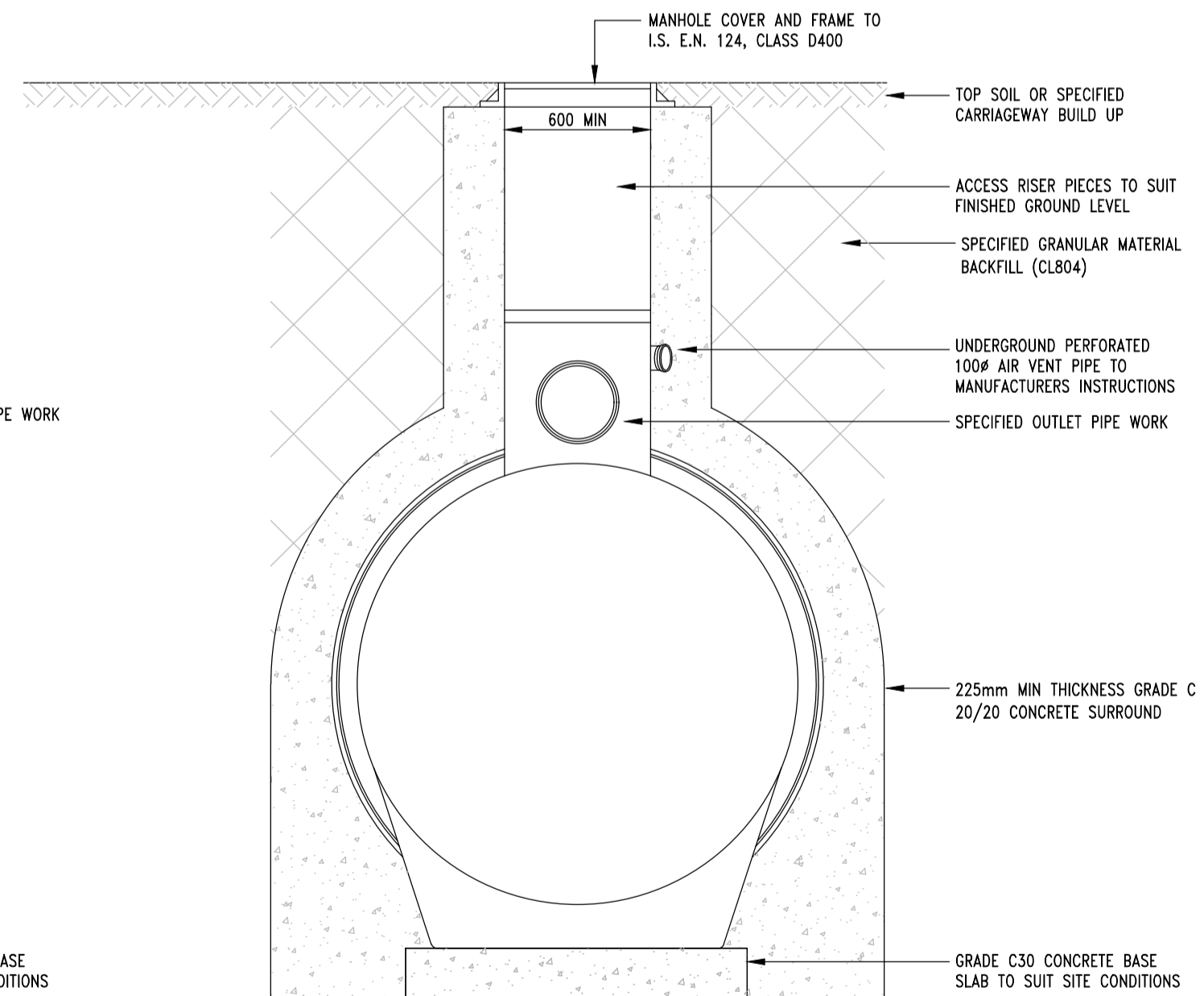
ROAD GULLY DETAILS
SCALE 1:25



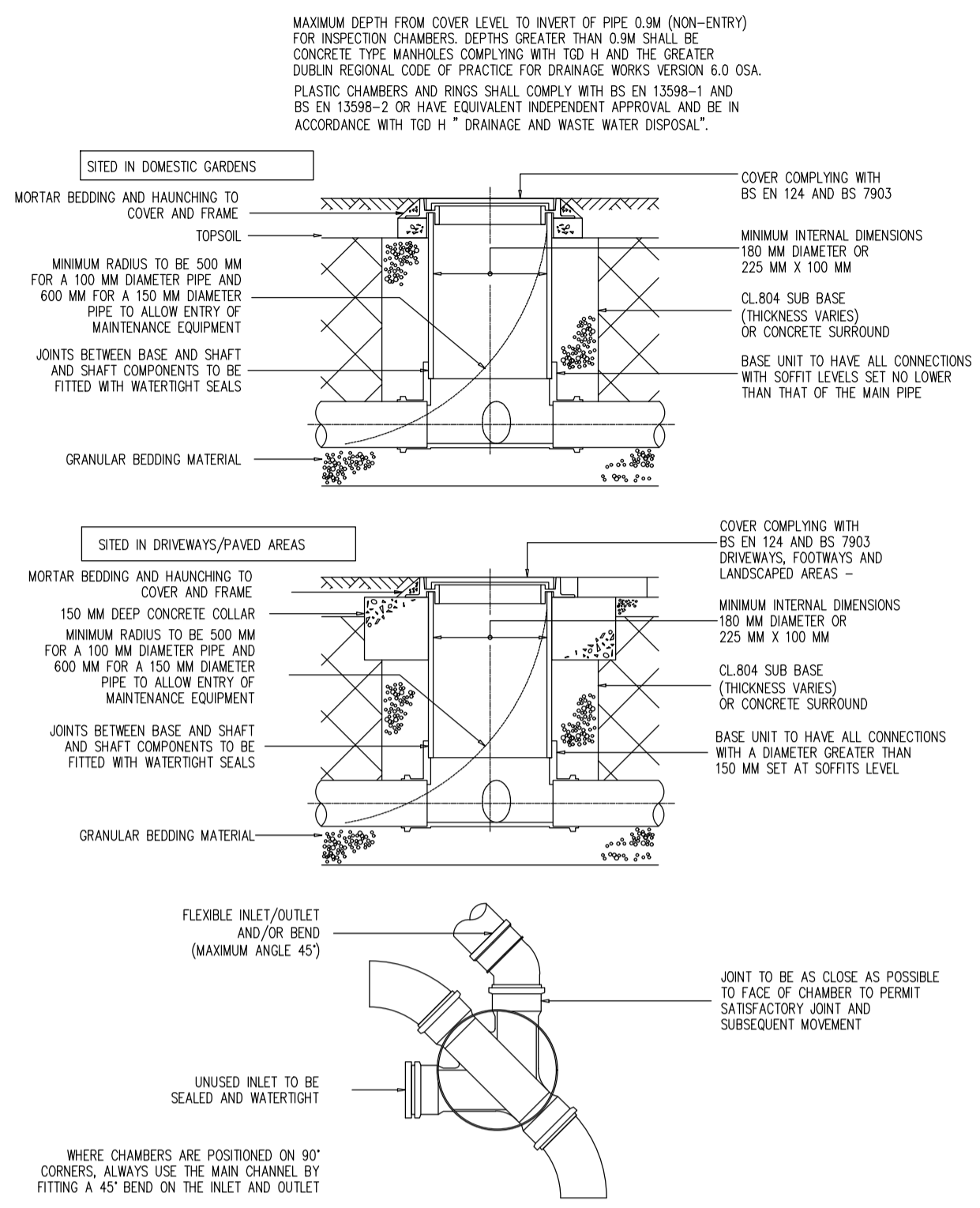
KLARGESTER CLASS 1 INTERCEPTOR (O.S.A.)
PLAN VIEW
SCALE 1:25



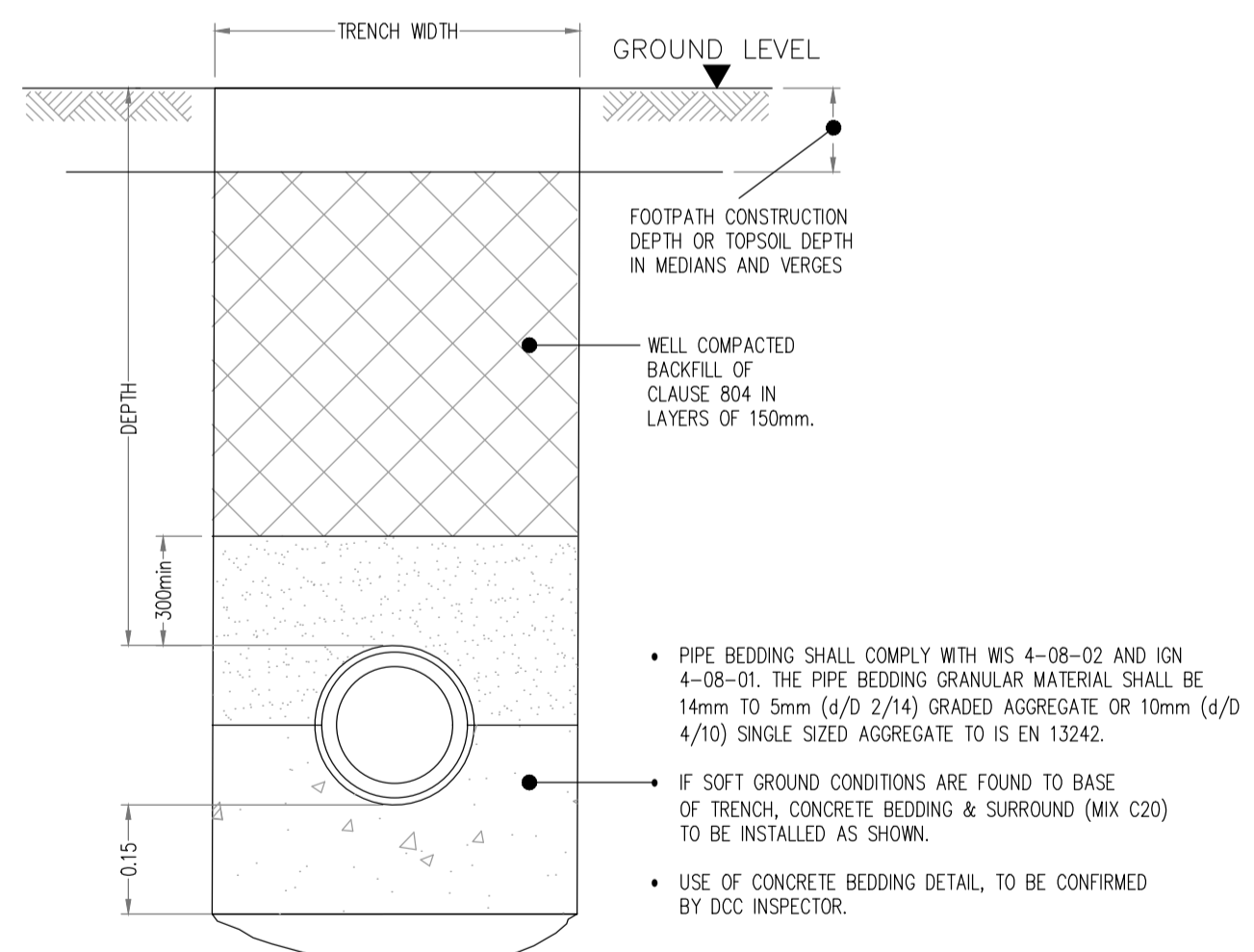
KLARGESTER CLASS 1 INTERCEPTOR (O.S.A.)
SECTION A-A
SCALE 1:25



KLARGESTER CLASS 1 INTERCEPTOR (O.S.A.)
SECTION B-B
SCALE 1:25



TYPICAL ARMSTRONG JUNCTION CHAMBER DETAIL
- (Flexible material detail)
NOT TO SCALE



PIPE BEDDING IF DEPTH OF COVER > 1.2m
SCALE 1:10

- NOTES :**
1. DO NOT SCALE FROM THIS DRAWING USE STATED DIMENSIONS ONLY. IF IN DOUBT CONSULT THE ENGINEER.
 2. LEVELS REFER TO O.S. DATUM MALIN HEAD.
 3. THIS DRAWING SHALL BE READ IN CONJUNCTION WITH THE ALL OF THE CONTRACT DOCUMENTS IN PARTICULAR THE ARCHITECT'S, LANDSCAPE ARCHITECT'S AND SERVICE ENGINEER'S SITE LAYOUT DRAWINGS.
 4. ALL CIVIL WORKS SHALL BE COMPLETED IN ACCORDANCE WITH MANUFACTURER'S SPECIFICATIONS.
 5. THE CONTRACTOR IS SOLELY RESPONSIBLE FOR LOCATING, PROTECTING AND MAINTAINING ALL EXISTING SERVICES WITHIN THE SITE BOUNDARY. THE ENGINEER HAS SHOWN KNOW SERVICES ON THE DRAWINGS BUT GIVES NO GUARANTEE THAT THESE ARE THE ONLY SERVICES WITHIN THE SITE BOUNDARY. THE CONTRACTOR SHALL CONTACT THE RELEVANT STATUTORY AND PRIVATE UTILITY COMPANIES AND CONFIRM THE LOCATION OF THEIR PLANT FOR HIMSELF.
 6. THE CONTRACTOR SHALL NOTIFY THE ENGINEER IN WRITING OF THE NAME AND LOCATION OF ALL TIPS USED FOR THE DISPOSAL OF MATERIAL OFF SITE.
 7. THE CONTRACTOR SHALL ENSURE THAT ADEQUATE PROVISIONS ARE IN PLACE TO PREVENT THE SPREAD OF DIRT, MUD AND SITE MATERIAL ON THE PUBLIC ROAD. THE CONTRACTOR SHALL ENSURE THAT THE PUBLIC ROADS AROUND THE SITE ARE CLEANED ON A REGULAR BASIS, OR AS DIRECTED BY THE ENGINEER, WITH A MECHANICAL SUCTION SWEEPER.
 8. THE CONTRACTOR SHALL TAKE ALL NECESSARY PRECAUTIONS TO ENSURE THAT NOISE AND DUST ARE MINIMISED.
 9. BLINDING CONCRETE SHALL BE GRADE 15N20. BLINDING SHALL BE A MINIMUM OF 100MM THICK. ALL STRUCTURAL CONCRETE SHALL BE GRADE 30N20 UNLESS SPECIFIED OTHERWISE ELSEWHERE.
 10. ALL EXPOSED CONCRETE FINISHES SHOULD BE FAIR FACED FINISHES UNLESS SPECIFIED OTHERWISE ELSEWHERE.

PLANNING DRAWING.
NOT FOR CONSTRUCTION.
ALL LEVELS GIVEN ARE
RELATIVE TO ORDNANCE DATUM.
THIS DRAWING HAS BEEN ISSUED FOR INFORMATION
PURPOSES ONLY AND MUST NOT BE USED
FOR CONSTRUCTION UNDER ANY CIRCUMSTANCES

- NOTES**
1. For setting out refer to Architect's drawings.
 2. This drawing to be read in conjunction with all other Architectural and Engineering drawings and all other relevant drawings and Specifications.
 3. DO NOT SCALE THIS DRAWING. Use figured dimensions only.
 4. No part of this document may be reproduced or transmitted in any form or stored in any retrieval system of any nature without the written permission as copyright holder except as agreed for use on the project for which the document was originally issued.
 5. Ordnance Survey Ireland Licence Number EN 0074024

Rev. No.	Date	REVISION NOTE	Dim. By	Chkd. By
P1	16.05.2024	ISSUED FOR STAGE 2 PLANNING	JF	GL
P2	28.06.2024	ISSUED FOR STAGE 3 PLANNING	JS	JF
P3	23.07.2024	ISSUED FOR REVIEW	JS	JF
P4	08.08.2024	ISSUED FOR REVIEW	JF	GF
P5	13.08.2024	ISSUED FOR PLANNING SUBMISSION	JS	GF

Date	Dim by	Chkd by	Aprvd by	Scale	Revision
MAY 2024	JS	JF	NB	AS SHOWN @A1	P5

Client	LDA Clongriffin Blocks 5 & 6
Project	Storm Water Drainage Details Sheet 3 of 3
Dwg No.	CLN-CSC-XX-XX-DR-C-0131
Date	MAY 2024
Dim by	JS
Chkd by	JF
Aprvd by	NB
Scale	AS SHOWN @A1
Revision	P5

CS Consulting Group
DUBLIN | LONDON | LIMERICK

Head Office:
19-22 Dame Street, Dublin 2.
T: +353 (0)1 5480863
e: info@csconsulting.ie
w: www.csconsulting.ie

Quality
NSAI Certified
I.S. EN ISO 9001:2008
Environment
I.S. EN ISO 14001:2004
Health & Safety
OHSAS 18001:2007