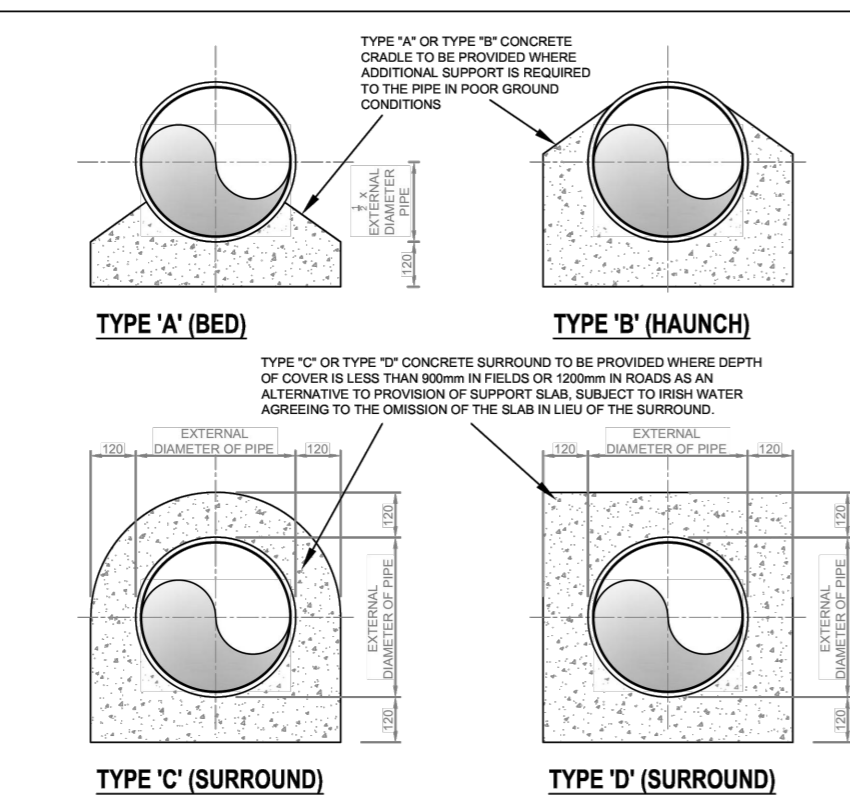
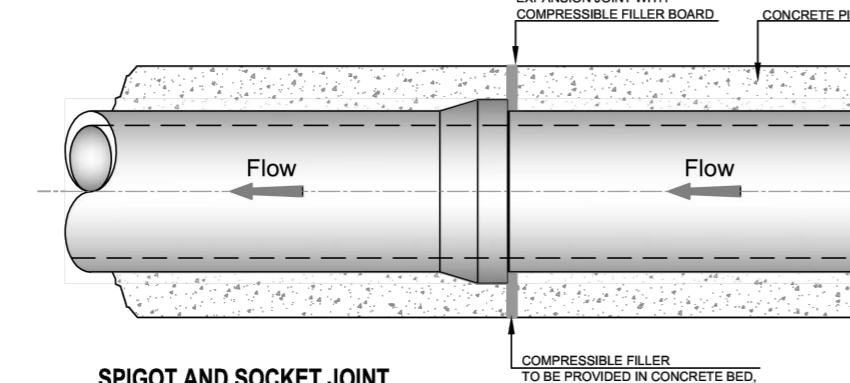


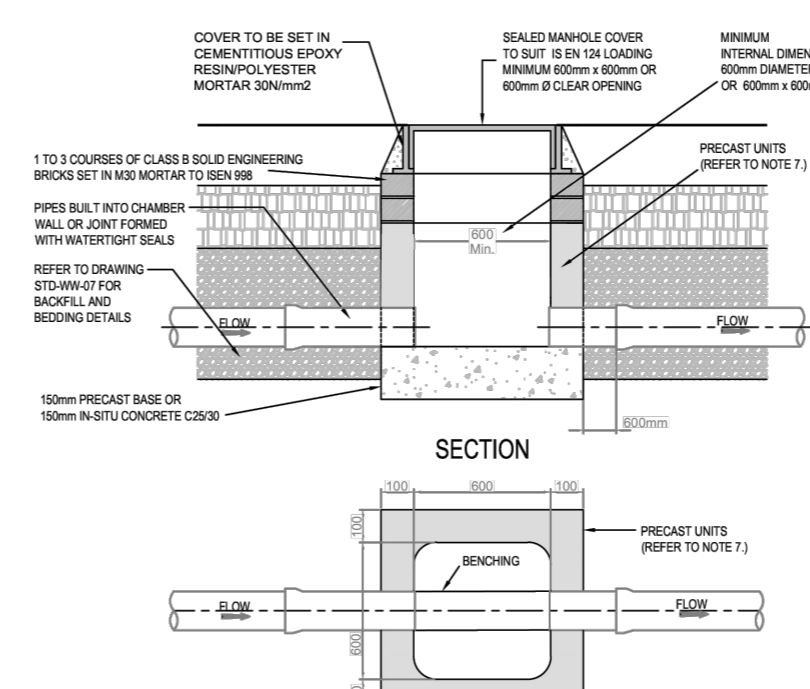
1. FOR ANY BLANKING WORKS TO BE CARRIED OUT WITHIN THE VICINITY OF THE PIPELINE, A METHOD STATEMENT IS TO BE SUBMITTED FOR REVIEW BY IRISH WATER.
2. MARKER TAPE TO BE PLACED ABOVE THE SLAB AND ALONG THE DIRECTION OF THE PIPELINE.
3. CONCRETE TO BE GRADE C30/35.
4. MINIMUM COVER TO STEEL REINFORCEMENT 40mm.
5. SLAB TO BE DESIGNED FOR USE UNDER A HEDS LOAD IN ACCORDANCE WITH BS8004. DESIGN TO BE SUBMITTED TO IRISH WATER FOR ASSESSMENT PRIOR TO INSTALLATION.
6. THE SOIL ON WHICH THE SLAB RESTS MUST HAVE A CBR OF 4% OR GREATER. WHERE THE CBR IS LESS THAN 4% THE MATERIAL SHALL BE REMOVED AND REPLACED WITH IMPORTED GRANULAR MATERIAL AS APPROVED BY IRISH WATER.
7. IF DIRECTION OF PIPELINE AND DIRECTION OF TRAFFIC FLOW ARE PARALLEL, THE DIRECTION OF LAY OF THE SLAB IS TO BE AGAINST THE DIRECTION OF TRAFFIC FLOW.
8. IF PIPELINE PROTECTION SLAB IS TO BE USED SOLELY FOR IMPACT PROTECTION & OVERALL DEPTH OF COVER IS GREATER THAN 1.2m, THE DISTANCE BETWEEN UNDERGIDS OF SLAB & TOP OF PIPE MUST BE INCREASED AFTER CONSULTATION WITH IRISH WATER.



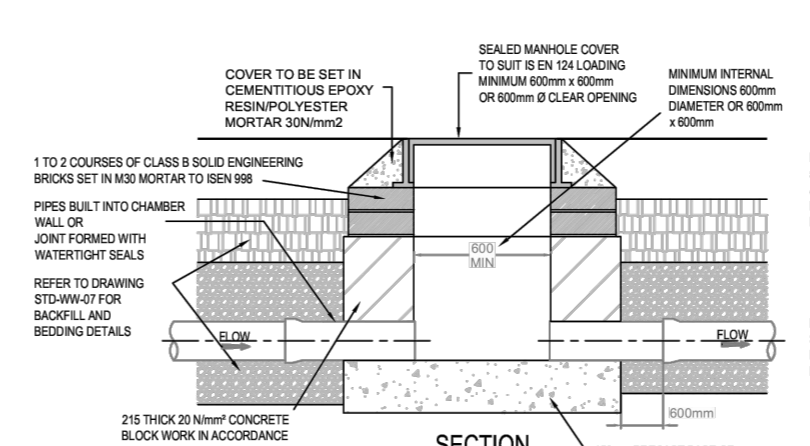
9. ALL DIMENSIONS ARE IN MILLIMETRES (mm) UNLESS NOTED OTHERWISE.
10. CONCRETE BED AND HAUNCHES MAY BE REQUIRED TO PROVIDE ADDITIONAL SUPPORT IN POOR GROUND CONDITIONS. PROPOSALS TO BE PROVIDED TO IRISH WATER WITH GEOTECHNICAL REPORT SUPPORTING THEIR USE.
11. CONCRETE SURROUNDS SHALL HAVE A MINIMUM THICKNESS OF 150mm WITH AN ABSOLUTE MINIMUM DEPTH OF COVER ABOVE THE EXTERNAL CROWN OF THE PIPE OF 750mm.
12. ALL CONCRETE TO BE IN ACCORDANCE WITH BS EN 206 AND TO BE GRADE C30/35 TO B 2008.
13. THE HAUNCHES AND SURROUNDS TO BE FORMED USING FORM WORK TO PROVIDE A ROUGH CAST FINISH.
14. EXPANSION JOINTS IN THE CONCRETE SHALL BE PROVIDED AT ALL PIPE JOINTS TO ALLOW FOR PIPE FLEXIBILITY. COMPRESSIBLE FILLER SHALL BE IN ACCORDANCE WITH BS EN 822-1 AND BS EN 822-4, AND TO BE 18mm THICK.
15. POLYETHYLENE AND UPVC PIPES SHALL BE WRAPPED IN PLASTIC SHEETING HAVING A COMPOSITION IN ACCORDANCE WITH BS 6079 BEFORE BEING CAST INTO CONCRETE.
16. BITUMINOUS MATERIAL SHALL NOT BE PUT IN CONTACT WITH PE OR PVC PIPES.



STD-WW-08. CONCRETE PROTECTION SLAB, BED, HAUNCH, AND SURROUND, TO WASTEWATER PIPES.
NTS

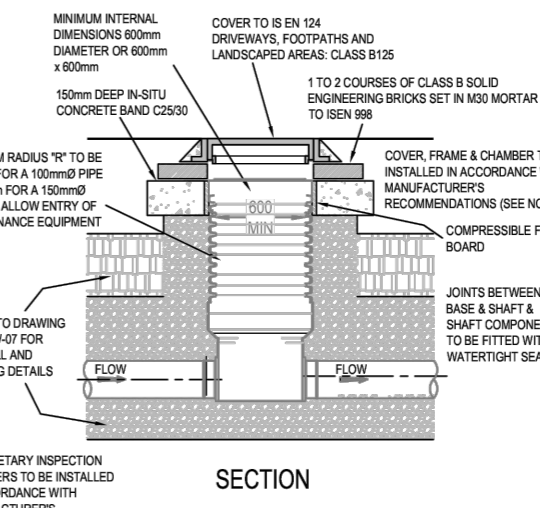


FLOOR PLAN INSPECTION CHAMBER (PRECAST CONCRETE CONSTRUCTION)



FLOOR PLAN INSPECTION CHAMBER (BLOCK WORK CONSTRUCTION)

1. ALL DIMENSIONS ARE IN MILLIMETRES (mm) UNLESS NOTED OTHERWISE.
2. AN INSPECTION CHAMBER SHOULD BE LOCATED AT OR WITHIN 1m OF THE PROPERTY BOUNDARY AT THE UPSTREAM END OF EACH SERVICE CONNECTION ON THE PRIVATE SIDE OF THE CURTLAGGE, IF PRACTICABLE. CONSULT WITH IRISH WATER ON ALTERNATIVE LOCATIONS.
3. A PUBLIC ASSET PIPE UPSTREAM OF THE PROPERTY BOUNDARY & A PRIVATE DRAIN AND SHOULD BE CONSTRUCTED IN ACCORDANCE WITH THE BUILDING.
4. ACCESS POINTS SHOULD BE LOCATED SO THAT THEY ARE ACCESSIBLE AND APPROPRIATE TO THE MAINTENANCE AT ALL TIMES FOR USE. THEY SHOULD AVOID REAR GARDENS OR ENCLOSED LOCATIONS AND SHOULD NEVER BE COVERED WITH SURFACE DRESSING, TROPICAL, ETC.
5. COVERS AND FRAMES SHALL BE SUITABLE FOR ROAD AND TRAFFIC CONDITIONS SUBJECT TO REVIEW BY IRISH WATER.
6. 200mm ALL AROUND, 100mm DEEP CONCRETE PLINCH AROUND COVERS IN GREEN AREAS.
7. PROPRIETARY PREFABRICATED CHAMBER UNITS MAY ALSO BE USED, SUBJECT TO REVIEW BY IRISH WATER. SEE DETAIL BELOW.
8. CHAMBERS SHALL BE SURROUNDED BY A MINIMUM OF 150mm COMPACTED CLASS BA OR CLASS 60A MATERIAL AS PER STD-WW-07. MAXIMUM DEPTH FROM COVER LEVEL TO POINT OF PIPE 1.2m.
9. INTERNAL DIMENSIONS GREATER THAN 800 x 800mm OR 800mm x 800mm WHERE DEPTH EXCEEDS 1.2m. CONSULT WITH IRISH WATER.
10. SMALLER INSPECTION CHAMBERS WITH INTERNAL DIMENSIONS OF 400mm Ø OR 400 x 400mm MAY BE PERMITTED SUBJECT TO APPROVAL BY IRISH WATER WHERE CONFIRMED PHYSICAL CONDITIONS EXIST.
11. PREFABRICATED UNITS SHOULD HAVE WATER TIGHT JOINTS AND SHOULD BE INTERLOCKING TO PREVENT LATERAL MOVEMENT OF INDIVIDUAL SECTIONS OF THE UNIT.



PROPRIETARY INSPECTION CHAMBER TO EN 13598-2 (FLEXIBLE MATERIAL, SUBJECT TO PRIOR IRISH WATER APPROVAL)
(MAXIMUM DEPTH FROM COVER LEVEL TO SOFFIT OF PIPE: 1.2m)

Rev. No.	Date	REVISION NOTE
P1	16.05.2024	ISSUED FOR STAGE 2 PLANNING
P2	28.06.2024	ISSUED FOR STAGE 3 PLANNING
P3	23.07.2024	ISSUED FOR REVIEW
P4	08.08.2024	ISSUED FOR REVIEW
P5	13.08.2024	ISSUED FOR PLANNING SUBMISSION

Drn. By	Chkd. By	Date	Scale	Revision
JF	GL			
JS	JF			
JF	GF			
JS	GF			

Client	LDA
Project	Clongriffin Blocks 5 & 6
Title	Foul Water Drainage Details Sheet 2 of 2
Dwg. No.	CLN-CSC-XX-XX-DR-C-0133
Date	MAY 2024

PLANNING DRAWING. NOT FOR CONSTRUCTION.
ALL LEVELS GIVEN ARE RELATIVE TO ORDNANCE DATUM.
THIS DRAWING HAS BEEN ISSUED FOR INFORMATION PURPOSES ONLY AND MUST NOT BE USED FOR CONSTRUCTION UNDER ANY CIRCUMSTANCES

CS Consulting Group
DUBLIN | LONDON | LIMERICK

Head Office
19-22 Dame Street, Dublin 2.
T: +353 (0)1 5480863
e: info@csconsulting.ie
w: www.csconsulting.ie

Quality
NSAI Certified

Environment
I.S. EN ISO 9001:2008
I.S. EN ISO 14001:2004
Energy
I.S. EN ISO 50001:2011
Health & Safety
OHSAS 18001:2007